

Lightsource Test Report

Product Information

Product Category: LED-Lampen
 Product Spec: LED-SLG35-E40-80-WW
 Manufacturer: METOLIGHT
 Buyer: 3811

Product Type: LED-Strassenlampen
 Product Number: 1
 Submitted Unit: 103785

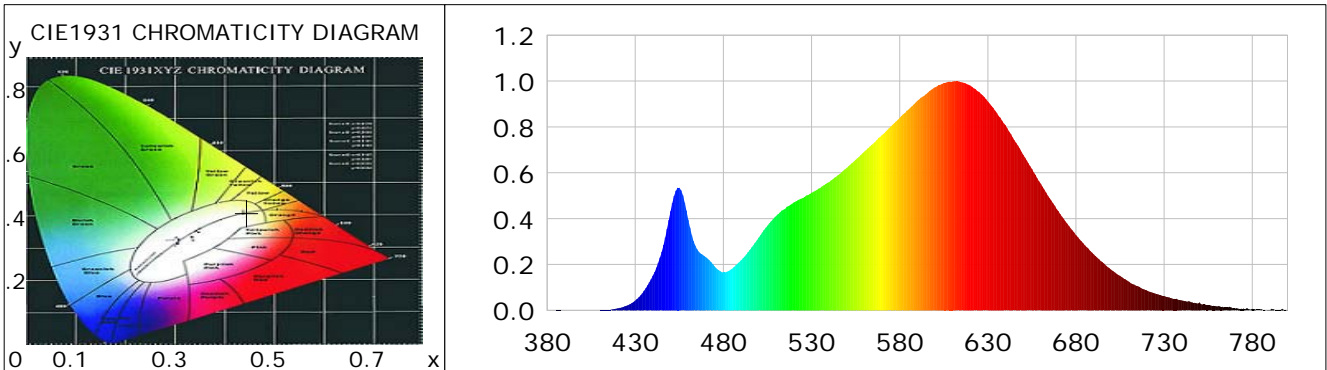
CIE Colorimetric Parameters

Chromaticity coordinates: $x=0.4448$ $y=0.4106$ $u(u')=0.2528$ $v=0.3501$ $v'=0.5251$
 CCT: $T_c=2924K$ ($duv=0.00152$) Color Ratio: $R=0.238$ $G=0.738$ $B=0.024$
 Peak Wavelength: 611.1nm Half Bandwidth: 137.2nm
 Dominant Wavelength: 582.6nm Color Purity: 0.568
 CRI: $R_a=85.7$, $avgR(1\sim14)=80.7$, $avgR(1\sim15)=80.6$ TM30: $R_f=87$, $R_g=96$
 GAI: $GAI_BB_8=90.1$, $GAI_BB_15=98.4$, $GAI_EES=49.8$

R1 =84	R2 =92	R3 =98	R4 =85	R5 =84	R6 =91	R7 =86	R8 =67
R9 =24	R10=81	R11=84	R12=71	R13=86	R14=99	R15=78	

Color Quality Scale: $Q_a=85.4$, $Q_f=87.3$, $Q_p=86.0$, $Q_g=91.6$

Q1 =82	Q2 =95	Q3 =85	Q4 =82	Q5 =85	Q6 =86	Q7 =86	Q8 =89
Q9 =96	Q10=92	Q11=89	Q12=88	Q13=87	Q14=77	Q15=79	



Photometric Parameters

Luminous Flux: 10266 lm	Efficiency: 124.32 lm/W	Radiant Power: 31.720 W
Total mains efficacy: 146.20 lm/W	Energy Efficiency Class: D (EU 2019/2015)	
Pupil Flux: 12733.27 Plm	Pupil Lumens Per Watt: 154.19 Plm/W	Pupil Factor (Kp): 1.240
Cirtpic Flux: 22936.12 lm		

Electric Parameters

Voltage: 230.60V	Current: 0.3581A	Power: 82.58W
Power Factor: 0.9670	Frequency: 49.99Hz	

Test Information

Scan Range: 380~800:1nm	Photometric Method: sphere-spectroradiometer
Stabilization Time: 0 ms ALC.: 1.0000	Photometric Condition: Sphere diameter: 2.00m, 4PI
Max of Signal: 44656 (2669)	CCD Integration Time: 121.44 ms

Condition: $T_x=23.2^{\circ}C$, $T_i=0.0^{\circ}C$, R.H.: 60%
 Test Lab:
 Operator: CRE

Test Device: Lisun LMS-9000B
 Test Time: 2021-02-11 12:08:37
 Inspector:

Lightsource Test Report

Product Information

Product Category: LED-Lampen
 Product Spec: LED-SLG35-E40-80-WW
 Manufacturer: METOLIGHT
 Buyer: 3811

Product Type: LED-Strassenlampen
 Product Number: 1
 Submitted Unit: 103785

WL(nm)	PL	PE(mW/nm)	WL(nm)	PL	PE(mW/nm)	WL(nm)	PL	PE(mW/nm)
380	0.0004	0.0800	525	0.4899	102.0869	670	0.4334	90.3224
385	0.0008	0.1675	530	0.5129	106.8907	675	0.3784	78.8568
390	0.0007	0.1504	535	0.5345	111.3921	680	0.3287	68.5078
395	0.0001	0.0179	540	0.5598	116.6592	685	0.2838	59.1468
400	0.0004	0.0914	545	0.5894	122.8220	690	0.2445	50.9443
405	0.0000	0.0091	550	0.6216	129.5421	695	0.2097	43.6965
410	0.0009	0.1803	555	0.6567	136.8612	700	0.1767	36.8198
415	0.0032	0.6579	560	0.6929	144.4049	705	0.1502	31.3050
420	0.0087	1.8185	565	0.7281	151.7330	710	0.1252	26.0937
425	0.0200	4.1684	570	0.7656	159.5540	715	0.1056	22.0097
430	0.0427	8.9043	575	0.8026	167.2642	720	0.0874	18.2185
435	0.0854	17.7927	580	0.8403	175.1208	725	0.0737	15.3574
440	0.1513	31.5208	585	0.8761	182.5731	730	0.0626	13.0443
445	0.2557	53.2823	590	0.9140	190.4698	735	0.0506	10.5554
450	0.4325	90.1310	595	0.9433	196.5777	740	0.0433	9.0208
455	0.5343	111.3530	600	0.9727	202.7091	745	0.0363	7.5686
460	0.3959	82.5018	605	0.9914	206.6170	750	0.0349	7.2684
465	0.2672	55.6896	610	0.9981	208.0039	755	0.0225	4.6965
470	0.2321	48.3618	615	0.9951	207.3804	760	0.0173	3.5954
475	0.1917	39.9496	620	0.9808	204.4049	765	0.0125	2.6100
480	0.1654	34.4781	625	0.9525	198.5098	770	0.0082	1.7110
485	0.1821	37.9497	630	0.9106	189.7792	775	0.0079	1.6480
490	0.2183	45.5042	635	0.8618	179.5986	780	0.0067	1.3943
495	0.2632	54.8574	640	0.8076	168.2967	785	0.0052	1.0904
500	0.3173	66.1322	645	0.7422	154.6728	790	0.0017	0.3573
505	0.3698	77.0582	650	0.6792	141.5397	795	0.0021	0.4316
510	0.4130	86.0752	655	0.6166	128.4998	800	0.0037	0.7809
515	0.4432	92.3545	660	0.5522	115.0864			
520	0.4708	98.1072	665	0.4899	102.0925			

Condition: Tx:23.2'C, Ti:0.0'C, R.H.:60%
 Test Lab:
 Operator: CRE

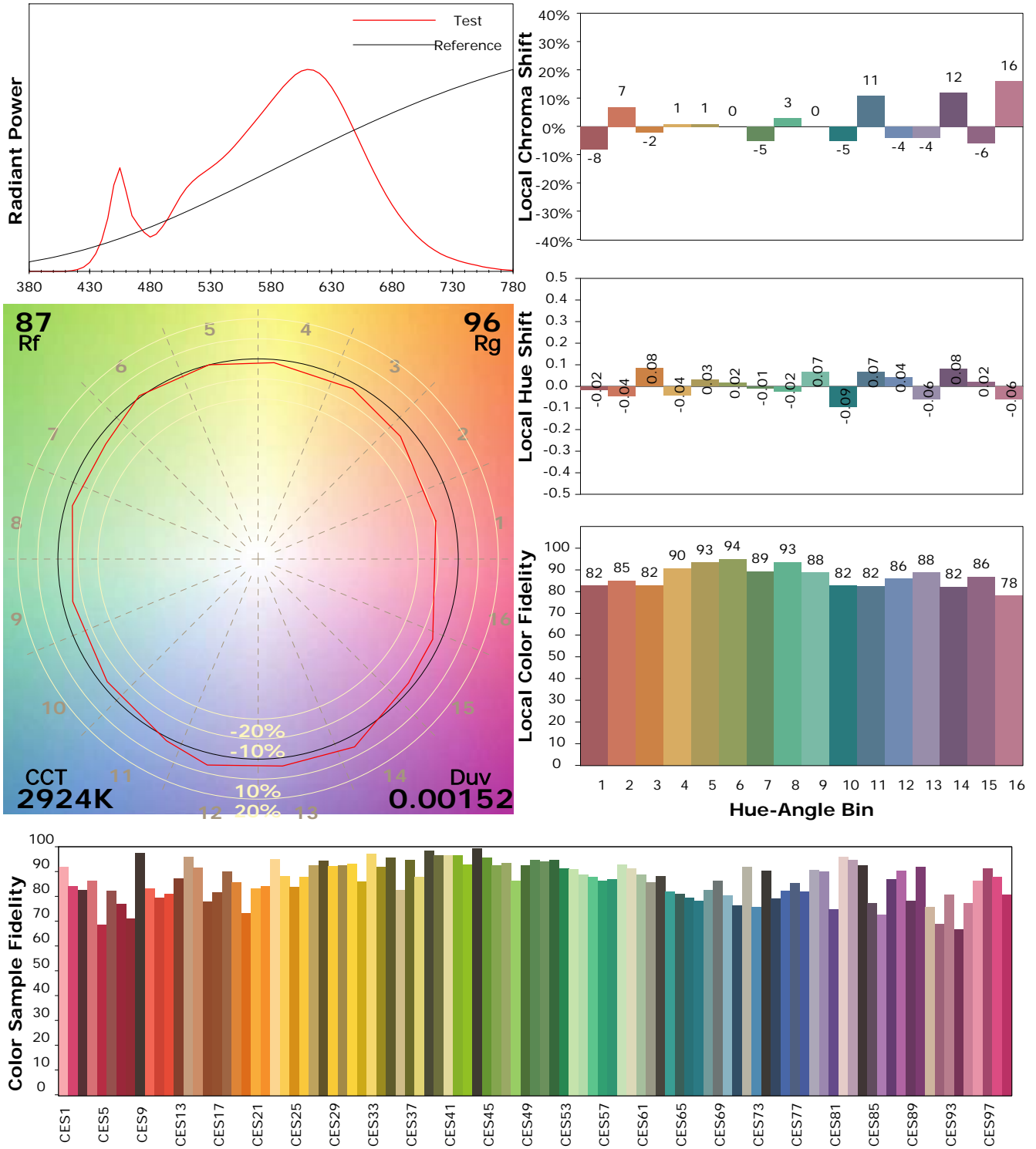
Test Device: Lisun LMS-9000B
 Test Time: 2021-02-11 12:08:37
 Inspector:

IES TM-30-18 Color Rendition Report

Product Information

Product Category: LED-Lampen
 Product Spec: LED-SLG35-E40-80-WW
 Manufacturer: METOLIGHT
 Buyer: 3811

Product Type: LED-Strassenlampen
 Product Number: 1
 Submitted Unit: 103785



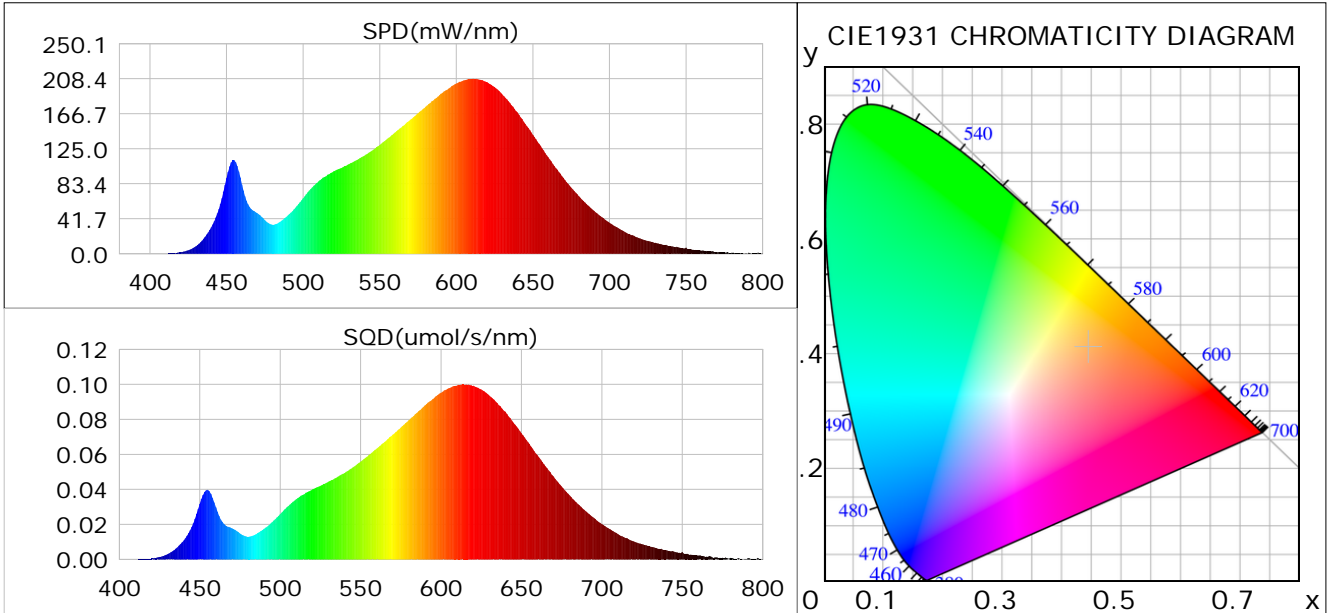
Condition: Tx: 23.2°C, Ti: 0.0°C, R.H.: 60%
 Test Lab:
 Operator: CRE

Test Device: Lisun LMS-9000B
 Test Time: 2021-02-11 12:08:37
 Inspector:

Plant optical param data

CIE Colorimetric Parameters

Chromaticity coordinates: $x=0.4448$ $y=0.4106$ $u(u')=0.2528$ $v=0.3501$ $v'=0.5251$
 CCT: $T_c=2924K$ ($duv=0.00152$) Color Ratio: $R=0.238$ $G=0.738$ $B=0.024$
 Peak Wavelength: 611.1nm Half Bandwidth: 137.2nm
 Dominant Wavelength: 582.6nm Color Purity: 0.568
 CRI: $R_a=85.7$



Plant Optical Param

$ \mu_v(lm): 10266.00$	$Q_v(lm.s): 10266.00$
$ \mu_e, \dot{E}(W/nm): 31.72$	$Q_e(J): 31.72$
$ \mu_e(W): 30.77$	$ \mu_{fr}(W): 1.00$
$ \zeta_e: 0.37$	$ \zeta_{fr}: 0.01$
$PPE(umol/s/w): 1.81$	$K_{fr}: 0.07$
$Erb_Ratio: 3.56$	$PPF(umol/s): 149.69$
$PF_{uv}(360-400)(umol/s): 0.01$	$PPF(400-500)(umol/s): 14.75$
$PPF(500-600)(umol/s): 62.97$	$PPF(600-700)(umol/s): 71.97$
$PPF_r(700-800)(umol/s): 5.80$	$PPF.t(umol): 149.69$
$ \mu_{ch-A.t}(J): 2.46$	$ \mu_{ch-A}(W): 2.46$
$ \mu_{ch-B.t}(J): 1.19$	$ \mu_{ch-B}(W): 1.19$
$ \mu_b.t(J): 3.79$	$ \mu_b(W): 3.79$
$ \mu_y.t(J): 13.55$	$ \mu_y(W): 13.55$
$ \mu_r.t(J): 13.70$	$ \mu_r(W): 13.70$

Electric Parameters

Voltage: 230.60V	Current: 0.3581A	Power: 82.58W
Power Factor: 0.9670	Frequency: 49.99Hz	

Condition: $T_x: 23.2^\circ C$, $T_i: 0.0^\circ C$, R.H.: 60%
 Test Lab:
 Operator: CRE

Test Device: Lisun LMS-9000B
 Test Time: 2021-02-11 12:08:37
 Inspector: