

Lightsource Test Report

Product Information

Product Category: LED-Lampen
 Product Spec: LED-SLG371-E40-45-WW
 Manufacturer: METOLIGHT
 Buyer: 3811

Product Type: LED-Strassenlampen
 Product Number: 1
 Submitted Unit: 102930

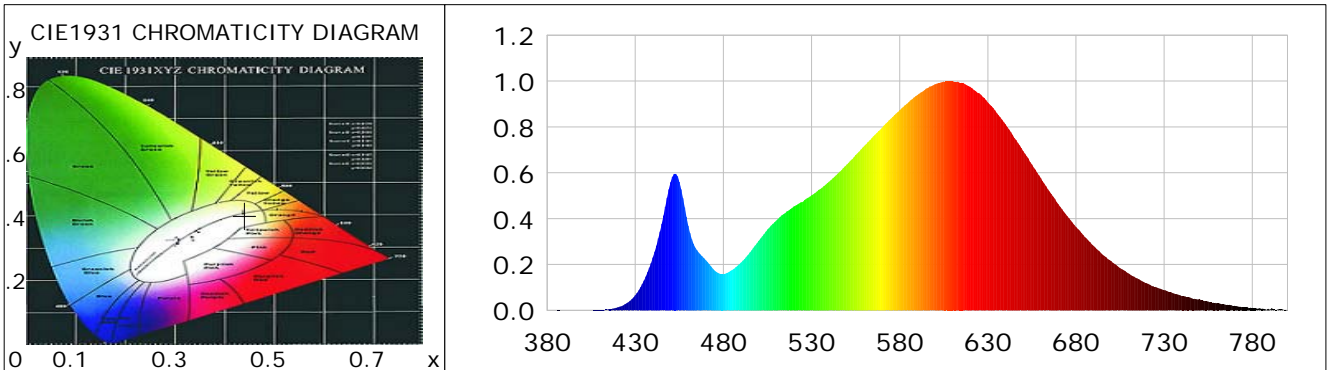
CIE Colorimetric Parameters

Chromaticity coordinates: $x=0.4406$ $y=0.4023$ $u(u')=0.2537$ $v=0.3475$ $v'=0.5212$
 CCT: $T_c=2924K$ ($duv=-0.00118$) Color Ratio: $R=0.236$ $G=0.740$ $B=0.024$
 Peak Wavelength: 609.6nm Half Bandwidth: 137.0nm
 Dominant Wavelength: 583.6nm Color Purity: 0.530
 CRI: $R_a=83.9$, $avgR(1\sim14)=78.8$, $avgR(1\sim15)=78.7$ TM30: $R_f=85$, $R_g=98$
 GAI: $GAI_BB_8=98.7$, $GAI_BB_15=105.7$, $GAI_EES=54.6$

R1 =82	R2 =91	R3 =97	R4 =82	R5 =82	R6 =88	R7 =84	R8 =65
R9 =21	R10=78	R11=80	R12=70	R13=84	R14=98	R15=77	

Color Quality Scale: $Q_a=82.9$, $Q_f=84.1$, $Q_p=85.7$, $Q_g=93.8$

Q1 =81	Q2 =96	Q3 =81	Q4 =79	Q5 =83	Q6 =83	Q7 =82	Q8 =85
Q9 =96	Q10=89	Q11=85	Q12=83	Q13=84	Q14=76	Q15=77	



Photometric Parameters

Luminous Flux: 6444.1 lm	Efficiency: 143.27 lm/W	Radiant Power: 20.408 W
Total mains efficacy: 168.48 lm/W	Energy Efficiency Class: C (EU 2019/2015)	
Pupil Flux: 7939.65 Plm	Pupil Lumens Per Watt: 176.52 Plm/W	Pupil Factor (Kp): 1.232
Cirtopic Flux: 14291.42 lm		

Electric Parameters

Voltage: 230.90V	Current: 0.2020A	Power: 44.98W
Power Factor: 0.9600	Frequency: 49.99Hz	

Test Information

Scan Range: 380~800:1nm	Photometric Method: sphere-spectroradiometer
Stabilization Time: 0 ms ALC.: 1.0000	Photometric Condition: Sphere diameter: 2.00m, 4PI
Max of Signal: 46578 (2544)	CCD Integration Time: 122.17 ms

Condition: $T_x:21.9^{\circ}C$, $T_i:0.0^{\circ}C$, R.H.:60%
 Test Lab:
 Operator: CRE

Test Device: Lisun LMS-9000B
 Test Time: 2021-02-11 14:11:19
 Inspector:

Lightsource Test Report

Product Information

Product Category: LED-Lampen
 Product Spec: LED-SLG371-E40-45-WW
 Manufacturer: METOLIGHT
 Buyer: 3811

Product Type: LED-Strassenlampen
 Product Number: 1
 Submitted Unit: 102930

WL(nm)	PL	PE(mW/nm)	WL(nm)	PL	PE(mW/nm)	WL(nm)	PL	PE(mW/nm)
380	0.0001	0.0142	525	0.4731	61.0787	670	0.4630	59.7769
385	0.0001	0.0147	530	0.5016	64.7490	675	0.4117	53.1501
390	0.0003	0.0351	535	0.5294	68.3445	680	0.3641	47.0103
395	0.0000	0.0019	540	0.5613	72.4593	685	0.3195	41.2416
400	0.0005	0.0647	545	0.5970	77.0748	690	0.2806	36.2293
405	0.0004	0.0472	550	0.6362	82.1273	695	0.2435	31.4393
410	0.0014	0.1806	555	0.6777	87.4891	700	0.2148	27.7258
415	0.0049	0.6356	560	0.7183	92.7285	705	0.1837	23.7191
420	0.0127	1.6459	565	0.7592	98.0160	710	0.1602	20.6780
425	0.0304	3.9182	570	0.7967	102.8533	715	0.1384	17.8620
430	0.0658	8.4992	575	0.8362	107.9497	720	0.1186	15.3069
435	0.1300	16.7789	580	0.8734	112.7542	725	0.1025	13.2356
440	0.2307	29.7855	585	0.9069	117.0824	730	0.0883	11.3963
445	0.3780	48.8041	590	0.9392	121.2428	735	0.0753	9.7221
450	0.5586	72.1077	595	0.9670	124.8300	740	0.0627	8.0958
455	0.5609	72.4121	600	0.9864	127.3355	745	0.0545	7.0335
460	0.3695	47.6978	605	0.9981	128.8542	750	0.0501	6.4659
465	0.2622	33.8493	610	1.0000	129.0962	755	0.0386	4.9832
470	0.2189	28.2616	615	0.9924	128.1206	760	0.0310	3.9978
475	0.1738	22.4350	620	0.9749	125.8512	765	0.0243	3.1340
480	0.1584	20.4445	625	0.9471	122.2627	770	0.0197	2.5486
485	0.1759	22.7115	630	0.9065	117.0314	775	0.0147	1.8917
490	0.2086	26.9330	635	0.8610	111.1554	780	0.0109	1.4074
495	0.2525	32.6026	640	0.8118	104.7981	785	0.0072	0.9290
500	0.3033	39.1566	645	0.7523	97.1181	790	0.0032	0.4191
505	0.3525	45.5117	650	0.6950	89.7167	795	0.0048	0.6260
510	0.3923	50.6470	655	0.6361	82.1151	800	0.0038	0.4955
515	0.4243	54.7816	660	0.5774	74.5342			
520	0.4533	58.5182	665	0.5184	66.9297			

Condition: Tx:21.9'C, Ti:0.0'C, R.H.:60%
 Test Lab:
 Operator: CRE

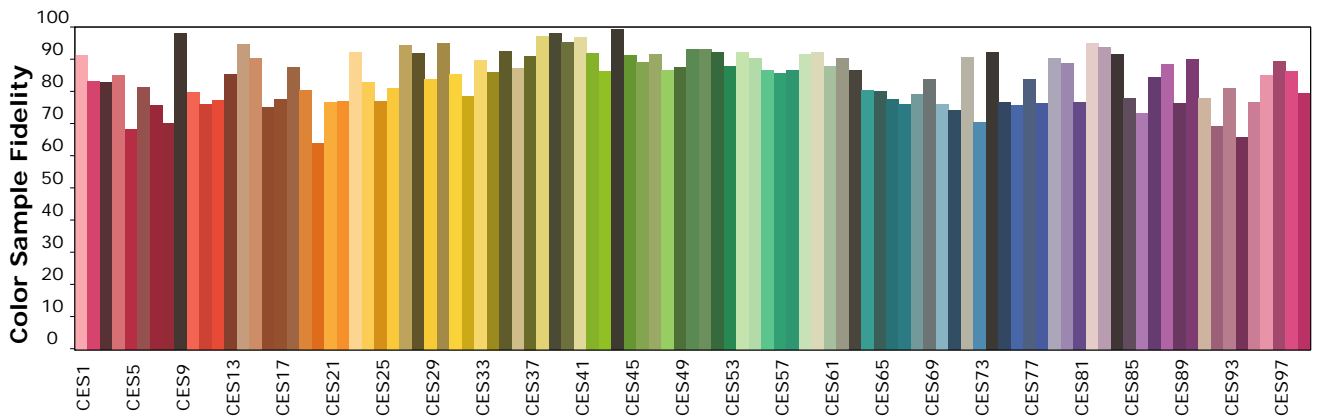
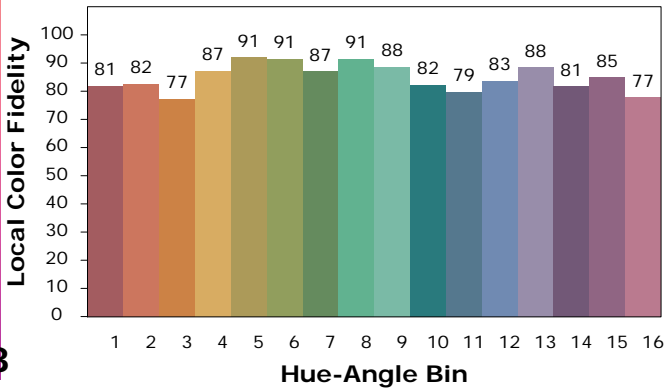
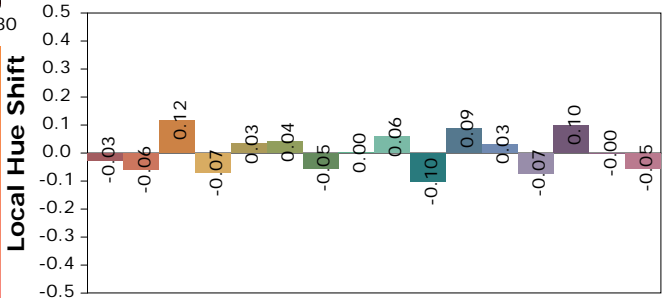
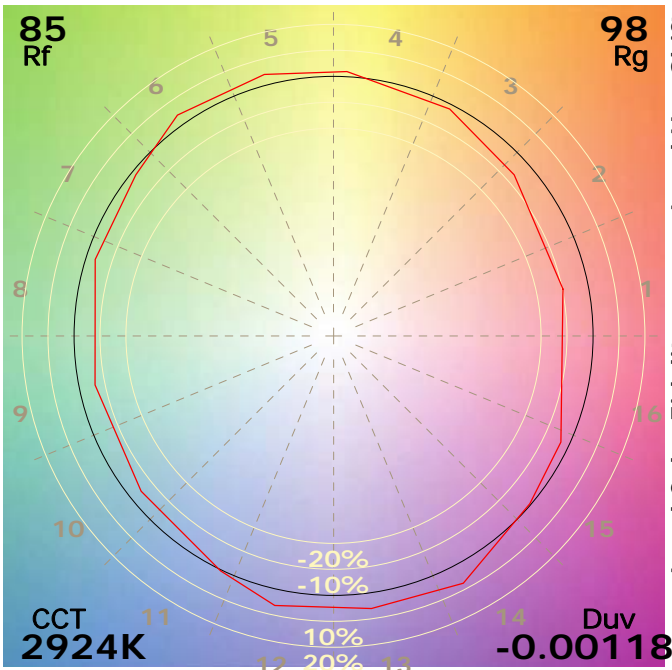
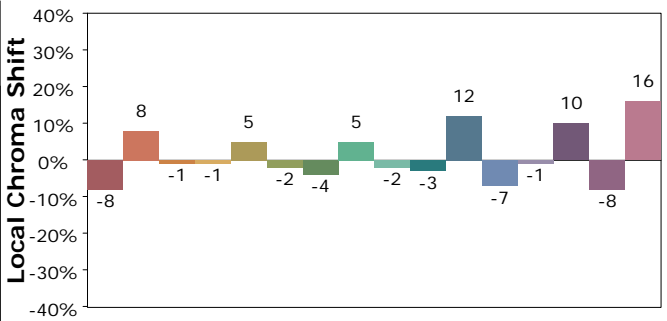
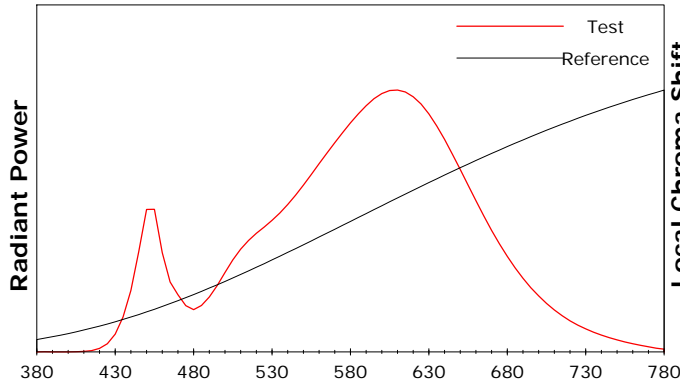
Test Device: Lisun LMS-9000B
 Test Time: 2021-02-11 14:11:19
 Inspector:

IES TM-30-18 Color Rendition Report

Product Information

Product Category: LED-Lampen
 Product Spec: LED-SLG371-E40-45-WW
 Manufacturer: METOLIGHT
 Buyer: 3811

Product Type: LED-Strassenlampen
 Product Number: 1
 Submitted Unit: 102930



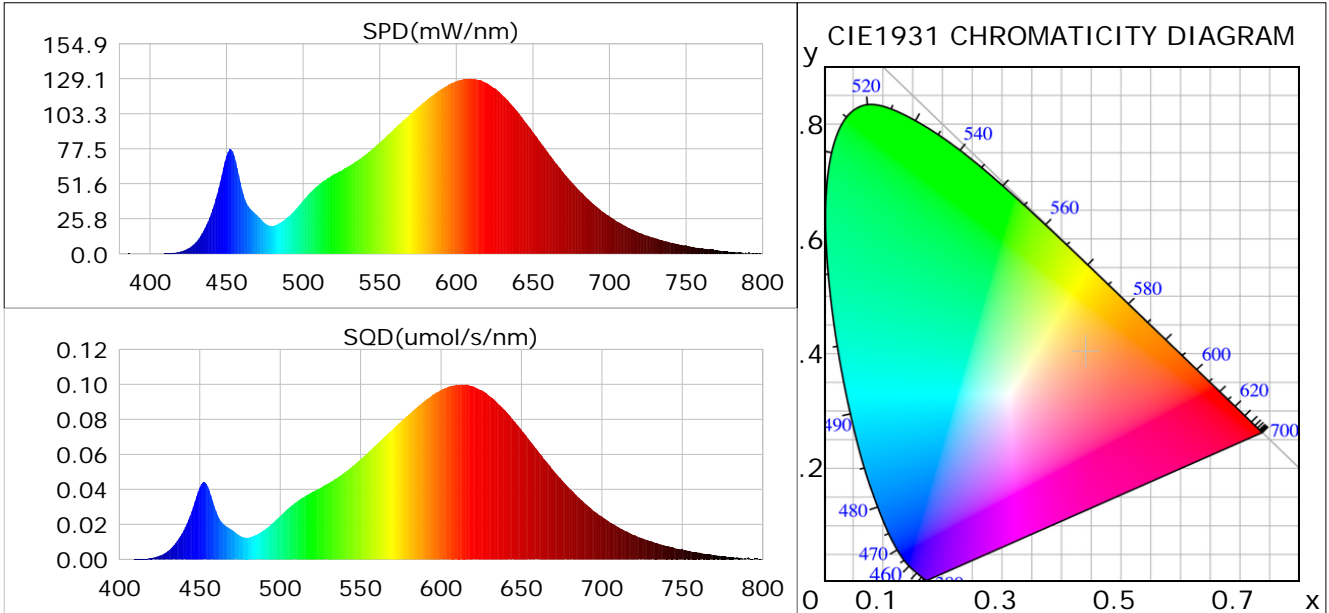
Condition: Tx:21.9°C, Ti:0.0°C, R.H.:60%
 Test Lab:
 Operator: CRE

Test Device: Lisun LMS-9000B
 Test Time: 2021-02-11 14:11:19
 Inspector:

Plant optical param data

CIE Colorimetric Parameters

Chromaticity coordinates: $x=0.4406$ $y=0.4023$ $u(u')=0.2537$ $v=0.3475$ $v'=0.5212$
 CCT: $T_c=2924K$ ($duv=-0.00118$) Color Ratio: $R=0.236$ $G=0.740$ $B=0.024$
 Peak Wavelength: 609.6nm Half Bandwidth: 137.0nm
 Dominant Wavelength: 583.6nm Color Purity: 0.530
 CRI: $R_a=83.9$



Plant Optical Param

$ \mu_v(lm)$: 6444.10	$Q_v(lm.s)$: 6444.10
$ \mu_e, \dot{E}(W/nm)$: 20.41	$Q_e(J)$: 20.41
$ \mu_e(W)$: 19.60	$ \mu_{fr}(W)$: 0.85
$ \zeta_e$: 0.44	$ \zeta_{fr}$: 0.02
PPE(umol/s/w): 2.12	Kfr: 0.11
Erb_Ratio: 3.34	PPF(umol/s): 95.27
PFuv(360-400)(umol/s): 0.00	PPF(400-500)(umol/s): 9.92
PPF(500-600)(umol/s): 39.57	PPF(600-700)(umol/s): 45.78
PPfr(700-800)(umol/s): 4.98	PPF.t(umol): 95.27
$ \mu_{ch-A.t}(J)$: 1.62	$ \mu_{ch-A}(W)$: 1.62
$ \mu_{ch-B.t}(J)$: 0.77	$ \mu_{ch-B}(W)$: 0.77
$ \mu_b.t(J)$: 2.56	$ \mu_b(W)$: 2.56
$ \mu_y.t(J)$: 8.50	$ \mu_y(W)$: 8.50
$ \mu_r.t(J)$: 8.70	$ \mu_r(W)$: 8.70

Electric Parameters

Voltage: 230.90V	Current: 0.2020A	Power: 44.98W
Power Factor: 0.9600	Frequency: 49.99Hz	

Condition: $T_x:21.9^\circ C$, $T_i:0.0^\circ C$, R.H.:60%
 Test Lab:
 Operator: CRE

Test Device: Lisun LMS-9000B
 Test Time: 2021-02-11 14:11:19
 Inspector: