

Lightsource Test Report

Product Information

Product Category: LED-PL-Röhren
 Product Spec: LED-PL-G24D-06-WW
 Manufacturer: METOLIGHT
 Buyer: 2320

Product Type: LED-PL-Röhren-G24
 Product Number: 1
 Submitted Unit: 101995

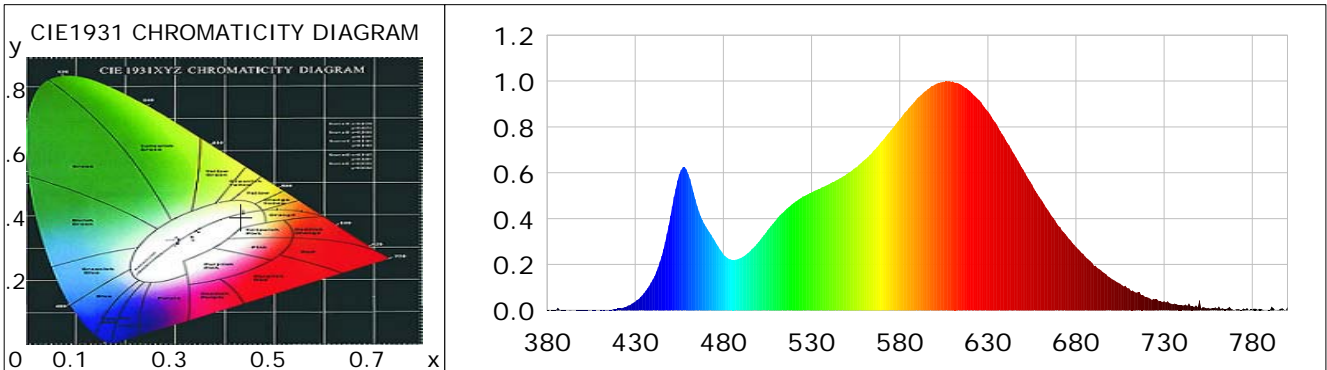
CIE Colorimetric Parameters

Chromaticity coordinates: $x=0.4331$ $y=0.3976$ $u(u')=0.2509$ $v=0.3455$ $v'=0.5182$
 CCT: $T_c=3012K$ ($duv=-0.00209$) Color Ratio: $R=0.236$ $G=0.735$ $B=0.029$
 Peak Wavelength: 607.8nm Half Bandwidth: 132.3nm
 Dominant Wavelength: 583.6nm Color Purity: 0.493
 CRI: $R_a=85.6$, $avgR(1\sim14)=81.2$, $avgR(1\sim15)=81.1$ TM30: $R_f=85$, $R_g=95$
 GAI: $GAI_BB_8=98.7$, $GAI_BB_15=107.2$, $GAI_EES=57.0$

R1 =86	R2 =95	R3 =95	R4 =83	R5 =86	R6 =94	R7 =82	R8 =64
R9 =21	R10=87	R11=83	R12=74	R13=88	R14=99	R15=79	

Color Quality Scale: $Q_a=84.4$, $Q_f=85.8$, $Q_p=86.3$, $Q_g=92.6$

Q1 =81	Q2 =94	Q3 =85	Q4 =80	Q5 =83	Q6 =85	Q7 =86	Q8 =87
Q9 =96	Q10=92	Q11=88	Q12=86	Q13=85	Q14=76	Q15=78	



Photometric Parameters

Luminous Flux: 487.33 lm	Efficiency: 85.20 lm/W	Radiant Power: 1.497 W
Total mains efficacy: 100.19 lm/W	Energy Efficiency Class: F (EU 2019/2015)	
Pupil Flux: 634.94 Plm	Pupil Lumens Per Watt: 111.00 Plm/W	Pupil Factor (Kp): 1.303
Cirtopic Flux: 1201.72 lm		

Electric Parameters

Voltage: 231.00V	Current: 0.0270A	Power: 5.72W
Power Factor: 0.8970	Frequency: 49.99Hz	

Test Information

Scan Range: 380~800:1nm	Photometric Method: sphere-spectroradiometer
Stabilization Time: 0 ms ALC.: 1.0000	Photometric Condition: Sphere diameter: 2.00m, 4PI
Max of Signal: 45079 (2821)	CCD Integration Time: 695.38 ms

Condition: $T_x:0.0^{\circ}C$, $T_i:0.0^{\circ}C$, R.H.:60%
 Test Lab:
 Operator: CRE

Test Device: Lisun LMS-9000B
 Test Time: 2021-03-03 14:10:39
 Inspector:

Lightsource Test Report

Product Information

Product Category: LED-PL-Röhren
 Product Spec: LED-PL-G24D-06-WW
 Manufacturer: METOLIGHT
 Buyer: 2320

Product Type: LED-PL-Röhren-G24
 Product Number: 1
 Submitted Unit: 101995

WL(nm)	PL	PE(mW/nm)	WL(nm)	PL	PE(mW/nm)	WL(nm)	PL	PE(mW/nm)
380	0.0016	0.0156	525	0.4966	4.9923	670	0.3690	3.7098
385	0.0016	0.0157	530	0.5138	5.1653	675	0.3224	3.2407
390	0.0015	0.0151	535	0.5316	5.3440	680	0.2769	2.7838
395	0.0002	0.0018	540	0.5505	5.5343	685	0.2359	2.3716
400	0.0017	0.0176	545	0.5705	5.7347	690	0.1955	1.9653
405	0.0002	0.0023	550	0.5949	5.9802	695	0.1681	1.6901
410	0.0012	0.0125	555	0.6225	6.2571	700	0.1386	1.3936
415	0.0038	0.0384	560	0.6560	6.5944	705	0.1164	1.1697
420	0.0077	0.0775	565	0.6955	6.9916	710	0.0960	0.9654
425	0.0159	0.1601	570	0.7382	7.4205	715	0.0788	0.7919
430	0.0380	0.3819	575	0.7859	7.8996	720	0.0582	0.5849
435	0.0753	0.7565	580	0.8339	8.3827	725	0.0477	0.4793
440	0.1345	1.3525	585	0.8804	8.8504	730	0.0397	0.3987
445	0.2371	2.3836	590	0.9251	9.2997	735	0.0269	0.2709
450	0.4125	4.1461	595	0.9578	9.6282	740	0.0226	0.2277
455	0.5939	5.9701	600	0.9843	9.8948	745	0.0182	0.1830
460	0.5941	5.9724	605	0.9972	10.0243	750	0.0436	0.4385
465	0.4562	4.5863	610	0.9984	10.0361	755	0.0109	0.1097
470	0.3654	3.6731	615	0.9834	9.8859	760	0.0081	0.0817
475	0.3046	3.0624	620	0.9555	9.6047	765	0.0059	0.0597
480	0.2439	2.4515	625	0.9169	9.2166	770	0.0027	0.0268
485	0.2193	2.2040	630	0.8677	8.7219	775	0.0077	0.0776
490	0.2285	2.2974	635	0.8105	8.1473	780	0.0041	0.0412
495	0.2565	2.5786	640	0.7441	7.4801	785	0.0062	0.0622
500	0.2982	2.9978	645	0.6803	6.8390	790	0.0014	0.0141
505	0.3491	3.5093	650	0.6138	6.1706	795	0.0028	0.0281
510	0.3953	3.9741	655	0.5493	5.5221	800	0.0149	0.1499
515	0.4357	4.3794	660	0.4856	4.8812			
520	0.4685	4.7096	665	0.4261	4.2830			

Condition: Tx:0.0°C, Ti:0.0°C, R.H.:60%
 Test Lab:
 Operator: CRE

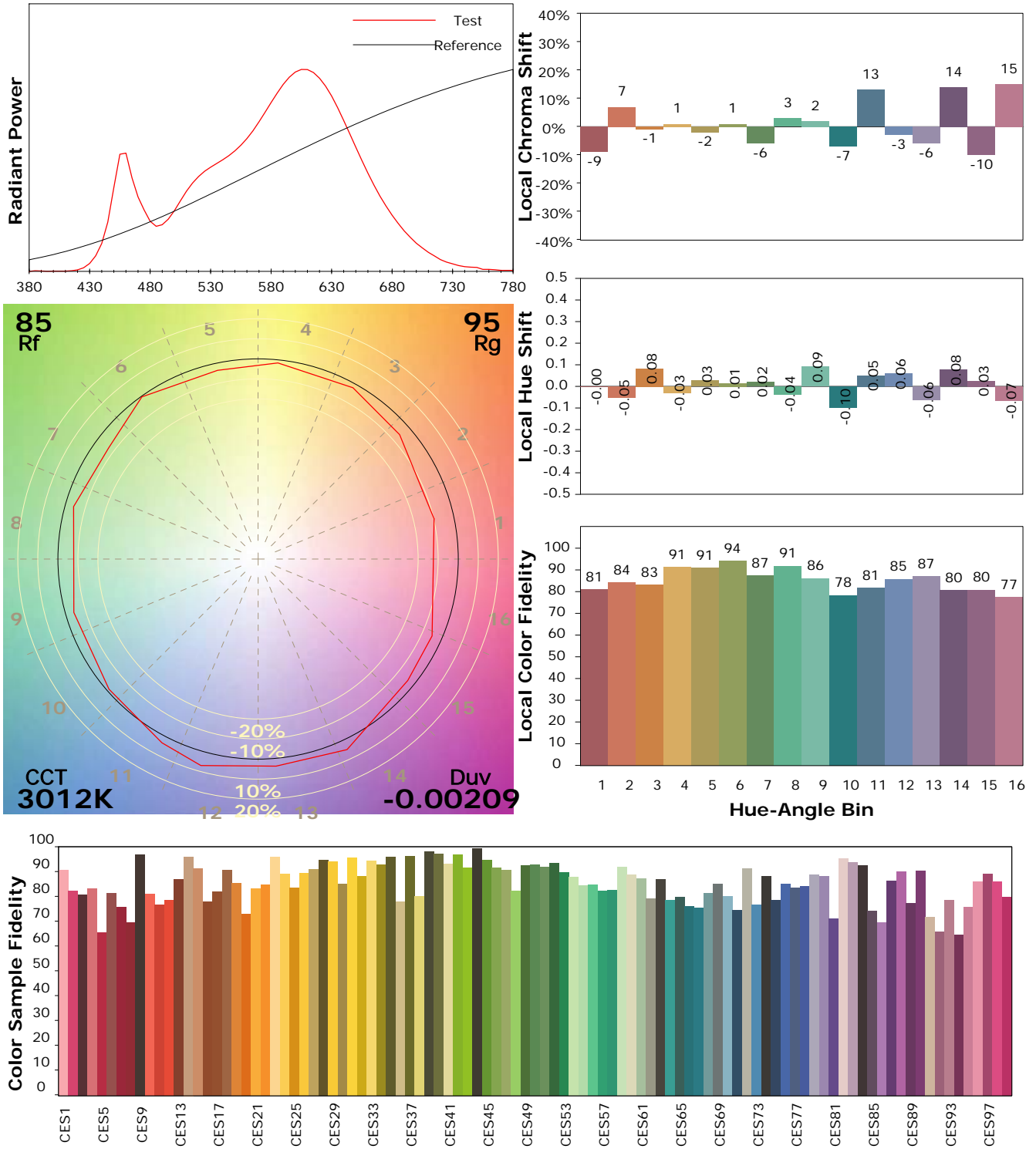
Test Device: Lisun LMS-9000B
 Test Time: 2021-03-03 14:10:39
 Inspector:

IES TM-30-18 Color Rendition Report

Product Information

Product Category: LED-PL-Röhren
 Product Spec: LED-PL-G24D-06-WW
 Manufacturer: METOLIGHT
 Buyer: 2320

Product Type: LED-PL-Röhren-G24
 Product Number: 1
 Submitted Unit: 101995



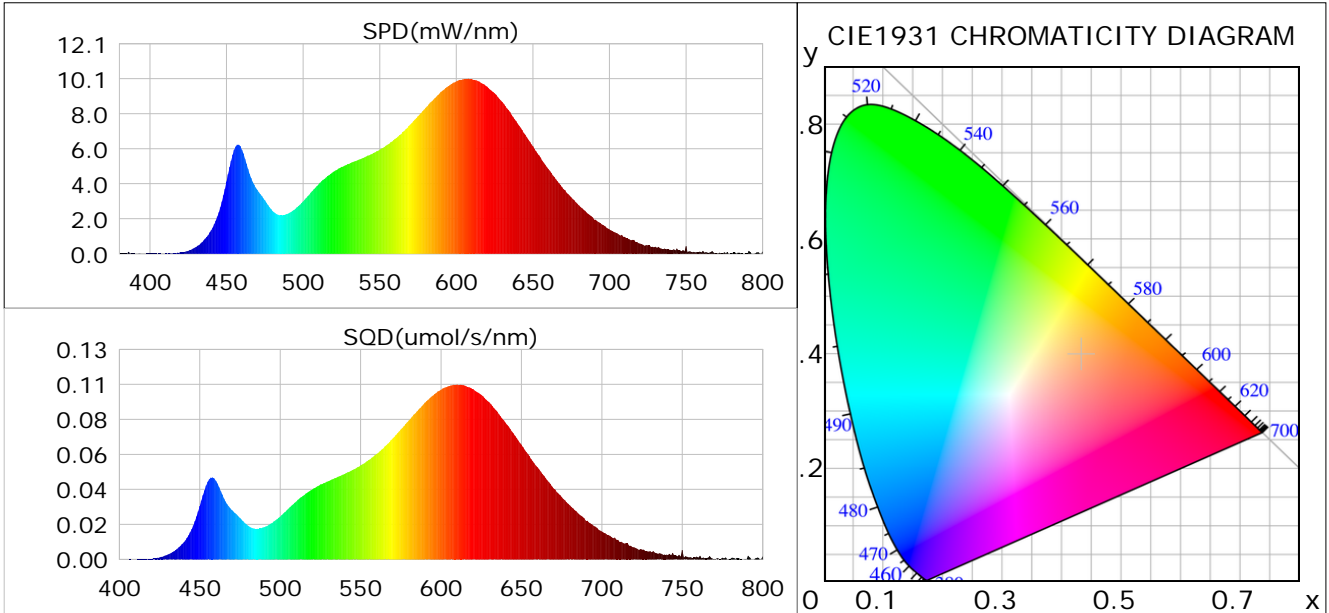
Condition: Tx:0.0°C, Ti:0.0°C, R.H.: 60%
 Test Lab:
 Operator: CRE

Test Device: Lisun LMS-9000B
 Test Time: 2021-03-03 14:10:39
 Inspector:

Plant optical param data

CIE Colorimetric Parameters

Chromaticity coordinates: $x=0.4331$ $y=0.3976$ $u(u')=0.2509$ $v=0.3455$ $v'=0.5182$
 CCT: $T_c=3012K$ ($duv=-0.00209$) Color Ratio: $R=0.236$ $G=0.735$ $B=0.029$
 Peak Wavelength: 607.8nm Half Bandwidth: 132.3nm
 Dominant Wavelength: 583.6nm Color Purity: 0.493
 CRI: $R_a=85.6$



Plant Optical Param

$ \mu_v(lm)$: 487.33	$Q_v(lm.s)$: 487.33
$ \mu_e, \dot{E}(W/nm)$: 1.50	$Q_e(J)$: 1.50
$ \mu_e(W)$: 1.47	$ \mu_{fr}(W)$: 0.03
$ \dot{C}_e$: 0.26	$ \dot{C}_{fr}$: 0.01
PPE(umol/s/w): 1.24	Kfr: 0.03
Erb_Ratio: 2.76	PPF(umol/s): 7.07
PFuv(360-400)(umol/s): 0.00	PPF(400-500)(umol/s): 0.86
PPF(500-600)(umol/s): 2.98	PPF(600-700)(umol/s): 3.23
PPfr(700-800)(umol/s): 0.19	PPF.t(umol): 7.07
$ \mu_{ch-A.t}(J)$: 0.11	$ \mu_{ch-A}(W)$: 0.11
$ \mu_{ch-B.t}(J)$: 0.06	$ \mu_{ch-B}(W)$: 0.06
$ \mu_b.t(J)$: 0.22	$ \mu_b(W)$: 0.22
$ \mu_y.t(J)$: 0.64	$ \mu_y(W)$: 0.64
$ \mu_r.t(J)$: 0.62	$ \mu_r(W)$: 0.62

Electric Parameters

Voltage: 231.00V	Current: 0.0270A	Power: 5.72W
Power Factor: 0.8970	Frequency: 49.99Hz	

Condition: $T_x=0.0^\circ C$, $T_i=0.0^\circ C$, R.H.: 60%
 Test Lab:
 Operator: CRE

Test Device: Lisun LMS-9000B
 Test Time: 2021-03-03 14:10:39
 Inspector: