

Lightsource Test Report

Product Information

Product Category: LED-PL-Röhre
 Product Spec: LED-PL-2G7-06-NW
 Manufacturer: METOLIGHT
 Buyer: 2320

Product Type: LED-PL-Röhren-2G7
 Product Number: 1
 Submitted Unit: 101990

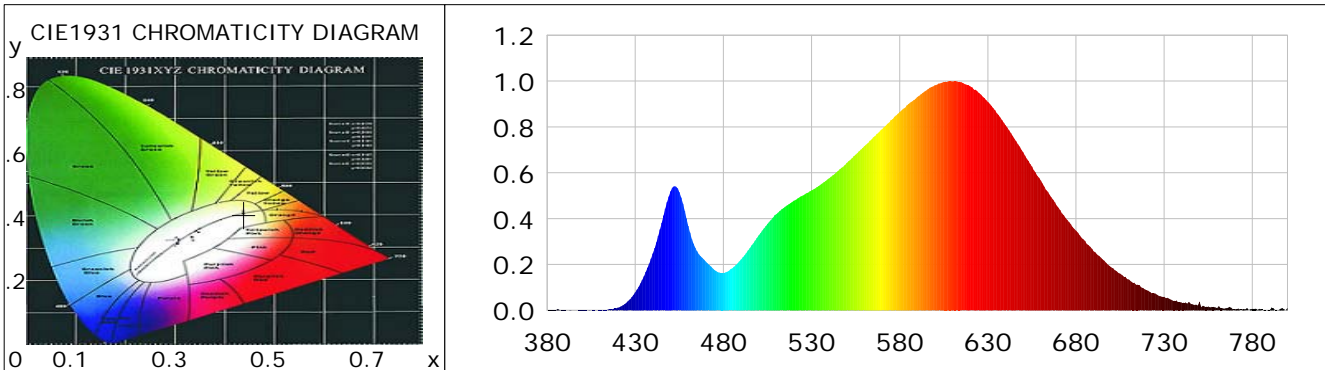
CIE Colorimetric Parameters

Chromaticity coordinates: $x=0.4389$ $y=0.4050$ $u(u')=0.2515$ $v=0.3480$ $v'=0.5220$
 CCT: $T_c=2975K$ ($duv=0.00009$) Color Ratio: $R=0.234$ $G=0.742$ $B=0.024$
 Peak Wavelength: 608.5nm Half Bandwidth: 140.7nm
 Dominant Wavelength: 582.9nm Color Purity: 0.533
 CRI: $R_a=85.0$, $avgR(1\sim14)=80.0$, $avgR(1\sim15)=79.9$ TM30: $R_f=86$, $R_g=98$
 GAI: $GAI_BB_8=95.3$, $GAI_BB_15=101.9$, $GAI_EES=54.0$

R1 =84	R2 =91	R3 =97	R4 =84	R5 =84	R6 =89	R7 =86	R8 =67
R9 =24	R10=79	R11=83	R12=71	R13=85	R14=98	R15=78	

Color Quality Scale: $Q_a=84.4$, $Q_f=85.8$, $Q_p=86.2$, $Q_g=93.4$

Q1 =82	Q2 =96	Q3 =83	Q4 =81	Q5 =84	Q6 =85	Q7 =85	Q8 =87
Q9 =96	Q10=90	Q11=87	Q12=86	Q13=85	Q14=77	Q15=78	



Photometric Parameters

Luminous Flux: 615.51 lm Efficiency: 98.48 lm/W Radiant Power: 1.913 W
 Total mains efficacy: 115.81 lm/W Energy Efficiency Class: E (EU 2019/2015)
 Pupil Flux: 769.24 Plm Pupil Lumens Per Watt: 123.08 Plm/W Pupil Factor (Kp): 1.250
 Circopic Flux: 1390.28 lm

Electric Parameters

Voltage: 230.90V Current: 0.0300A Power: 6.25W
 Power Factor: 0.8950 Frequency: 50.00Hz

Test Information

Scan Range: 380~800:1nm Photometric Method: sphere-spectroradiometer
 Stabilization Time: 0 ms ALC.: 1.0000 Photometric Condition: Sphere diameter: 2.00m, 4PI
 Max of Signal: 45676 (2473) CCD Integration Time: 699.59 ms

Lightsource Test Report

Product Information

Product Category: LED-PL-Röhre
 Product Spec: LED-PL-2G7-06-NW
 Manufacturer: METOLIGHT
 Buyer: 2320

Product Type: LED-PL-Röhren-2G7
 Product Number: 1
 Submitted Unit: 101990

WL(nm)	PL	PE(mW/nm)	WL(nm)	PL	PE(mW/nm)	WL(nm)	PL	PE(mW/nm)
380	0.0013	0.0155	525	0.5010	6.1325	670	0.4482	5.4857
385	0.0017	0.0203	530	0.5234	6.4070	675	0.3951	4.8356
390	0.0016	0.0201	535	0.5476	6.7032	680	0.3480	4.2601
395	0.0003	0.0034	540	0.5760	7.0498	685	0.3031	3.7097
400	0.0013	0.0163	545	0.6080	7.4419	690	0.2574	3.1500
405	0.0002	0.0027	550	0.6431	7.8719	695	0.2226	2.7252
410	0.0015	0.0185	555	0.6787	8.3070	700	0.1874	2.2938
415	0.0044	0.0533	560	0.7165	8.7705	705	0.1601	1.9599
420	0.0118	0.1443	565	0.7548	9.2389	710	0.1346	1.6478
425	0.0330	0.4035	570	0.7904	9.6740	715	0.1123	1.3747
430	0.0787	0.9632	575	0.8296	10.1546	720	0.0884	1.0818
435	0.1492	1.8261	580	0.8661	10.6012	725	0.0737	0.9017
440	0.2479	3.0342	585	0.9001	11.0166	730	0.0592	0.7250
445	0.3821	4.6774	590	0.9307	11.3916	735	0.0421	0.5151
450	0.5192	6.3555	595	0.9589	11.7365	740	0.0340	0.4161
455	0.5157	6.3123	600	0.9820	12.0200	745	0.0288	0.3521
460	0.3682	4.5071	605	0.9963	12.1947	750	0.0374	0.4583
465	0.2579	3.1572	610	0.9978	12.2129	755	0.0173	0.2121
470	0.2127	2.6039	615	0.9950	12.1785	760	0.0102	0.1254
475	0.1757	2.1509	620	0.9768	11.9563	765	0.0097	0.1181
480	0.1631	1.9958	625	0.9477	11.5993	770	0.0045	0.0555
485	0.1830	2.2400	630	0.9091	11.1273	775	0.0062	0.0755
490	0.2216	2.7123	635	0.8602	10.5287	780	0.0069	0.0847
495	0.2715	3.3226	640	0.8073	9.8811	785	0.0045	0.0552
500	0.3267	3.9994	645	0.7496	9.1747	790	0.0028	0.0337
505	0.3774	4.6196	650	0.6893	8.4370	795	0.0022	0.0275
510	0.4200	5.1414	655	0.6275	7.6811	800	0.0126	0.1536
515	0.4521	5.5337	660	0.5662	6.9303			
520	0.4786	5.8586	665	0.5041	6.1707			

Condition: Tx:0.0°C, Ti:0.0°C, R.H.:60%
 Test Lab:
 Operator: CRE

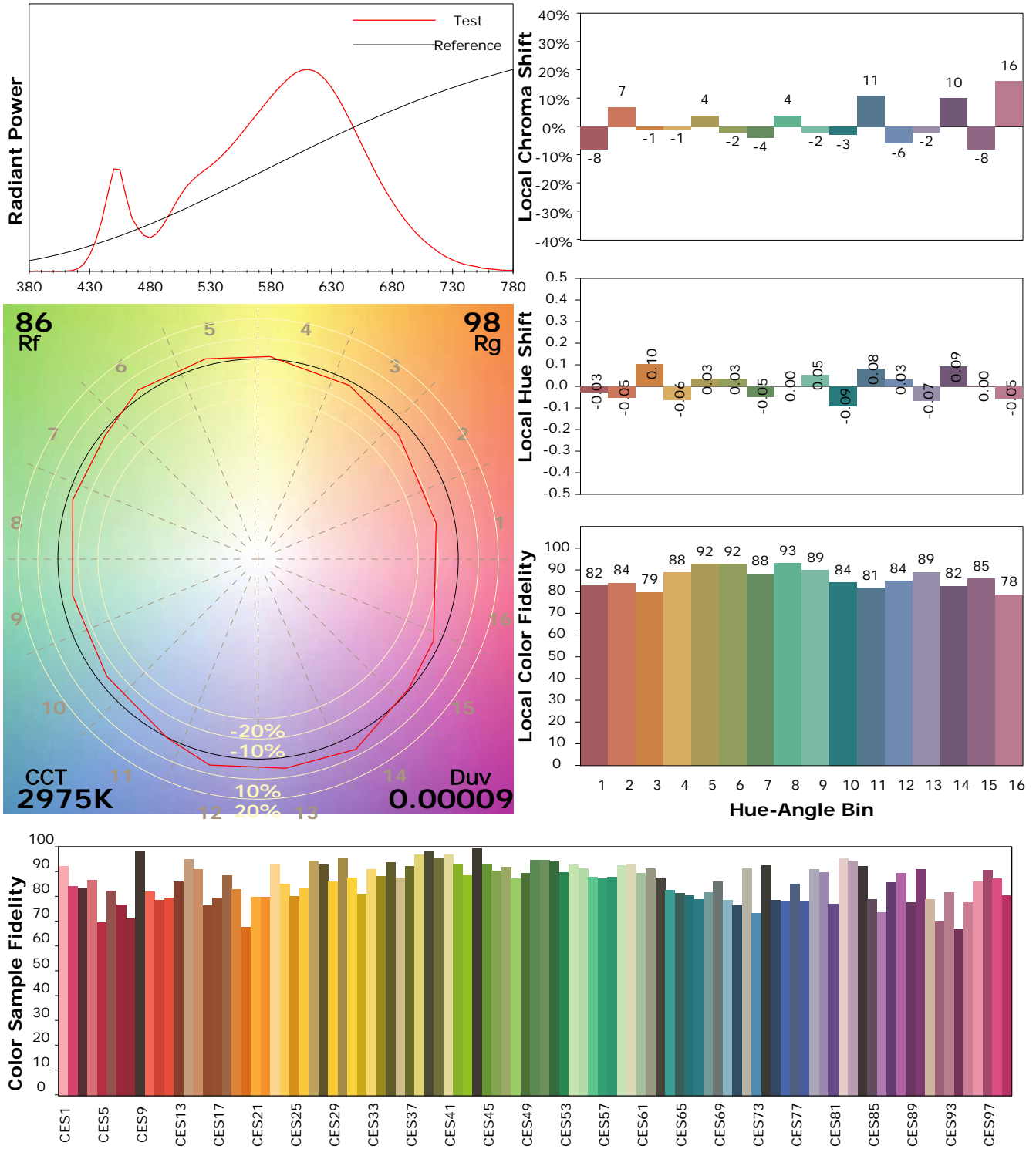
Test Device: Lisun LMS-9000B
 Test Time: 2021-03-05 09:25:01
 Inspector:

IES TM-30-18 Color Rendition Report

Product Information

Product Category: LED-PL-Röhre
 Product Spec: LED-PL-2G7-06-NW
 Manufacturer: METOLIGHT
 Buyer: 2320

Product Type: LED-PL-Röhren-2G7
 Product Number: 1
 Submitted Unit: 101990



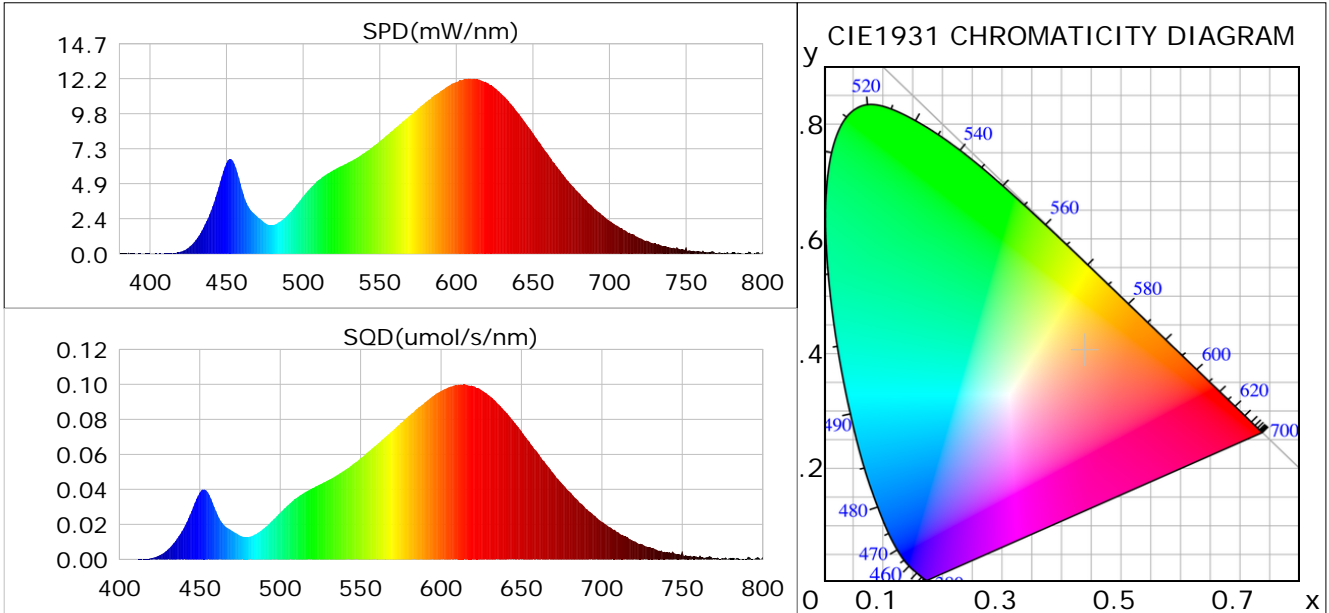
Condition: Tx:0.0°C, Ti:0.0°C, R.H.: 60%
 Test Lab:
 Operator: CRE

Test Device: Lisun LMS-9000B
 Test Time: 2021-03-05 09:25:01
 Inspector:

Plant optical param data

CIE Colorimetric Parameters

Chromaticity coordinates: $x=0.4389$ $y=0.4050$ $u(u')=0.2515$ $v=0.3480$ $v'=0.5220$
 CCT: $T_c=2975K$ ($duv=0.00009$) Color Ratio: $R=0.234$ $G=0.742$ $B=0.024$
 Peak Wavelength: 608.5nm Half Bandwidth: 140.7nm
 Dominant Wavelength: 582.9nm Color Purity: 0.533
 CRI: $R_a=85.0$



Plant Optical Param

$ \mu_v(lm): 615.51$	$Q_v(lm.s): 615.51$
$ \mu_e, \dot{E}(W/nm): 1.91$	$Q_e(J): 1.91$
$ \mu_e(W): 1.86$	$ \mu_{fr}(W): 0.06$
$ \zeta_e: 0.30$	$ \zeta_{fr}: 0.01$
$PPE(umol/s/w): 1.44$	$K_{fr}: 0.05$
$Erb_Ratio: 3.28$	$PPF(umol/s): 9.02$
$PF_{uv}(360-400)(umol/s): 0.00$	$PPF(400-500)(umol/s): 0.95$
$PPF(500-600)(umol/s): 3.79$	$PPF(600-700)(umol/s): 4.28$
$PPF_{fr}(700-800)(umol/s): 0.33$	$PPF.t(umol): 9.02$
$ \mu_{ch-A.t}(J): 0.15$	$ \mu_{ch-A}(W): 0.15$
$ \mu_{ch-B.t}(J): 0.07$	$ \mu_{ch-B}(W): 0.07$
$ \mu_b.t(J): 0.24$	$ \mu_b(W): 0.24$
$ \mu_y.t(J): 0.82$	$ \mu_y(W): 0.82$
$ \mu_r.t(J): 0.81$	$ \mu_r(W): 0.81$

Electric Parameters

Voltage: 230.90V	Current: 0.0300A	Power: 6.25W
Power Factor: 0.8950	Frequency: 50.00Hz	

Condition: $T_x:0.0^\circ C$, $T_i:0.0^\circ C$, R.H.: 60%
 Test Lab:
 Operator: CRE

Test Device: Lisun LMS-9000B
 Test Time: 2021-03-05 09:25:01
 Inspector: