

Lightsource Test Report

Product Information

Product Category: LED-Lampen
 Product Spec: LED-E27-Q8-5W-NW-dim
 Manufacturer: METOLIGHT
 Buyer: 2801

Product Type: LED-Lampen-E27
 Product Number: 1
 Submitted Unit: 100366

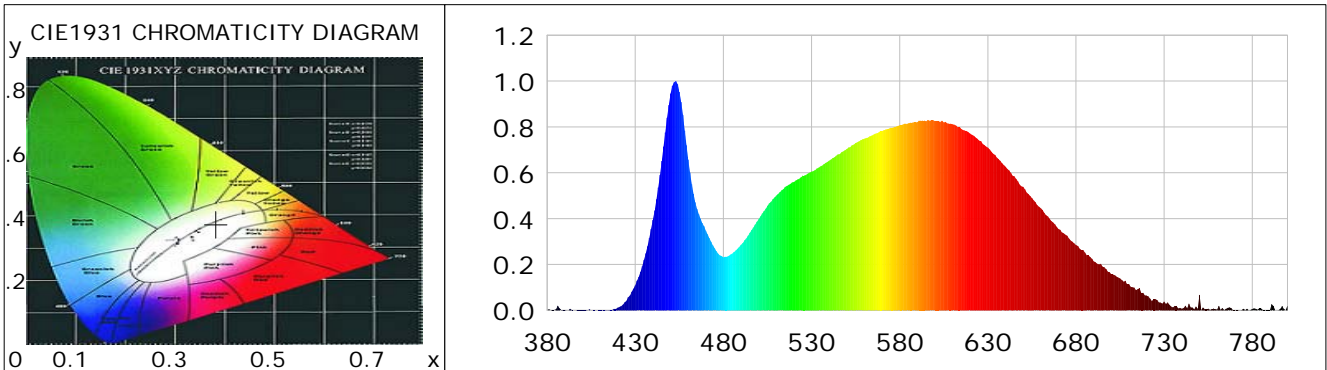
CIE Colorimetric Parameters

Chromaticity coordinates: $x=0.3825$ $y=0.3757$ $u(u')=0.2269$ $v=0.3343$ $v'=0.5014$
 CCT: $T_c=3936K$ ($duv=-0.00108$) Color Ratio: $R=0.190$ $G=0.775$ $B=0.036$
 Peak Wavelength: 452.8nm Half Bandwidth: 20.9nm
 Dominant Wavelength: 579.9nm Color Purity: 0.276
 CRI: $R_a=85.6$, $avgR(1\sim14)=79.9$, $avgR(1\sim15)=80.0$ TM30: $R_f=85$, $R_g=97$
 GAI: $GAI_BB_8=96.2$, $GAI_BB_15=102.9$, $GAI_EES=74.9$

R1 =85	R2 =90	R3 =94	R4 =85	R5 =84	R6 =86	R7 =89	R8 =73
R9 =30	R10=76	R11=83	R12=62	R13=86	R14=96	R15=81	

Color Quality Scale: $Q_a=84.6$, $Q_f=84.4$, $Q_p=85.5$, $Q_g=95.2$

Q1 =86	Q2 =99	Q3 =79	Q4 =76	Q5 =82	Q6 =85	Q7 =87	Q8 =90
Q9 =97	Q10=89	Q11=86	Q12=85	Q13=86	Q14=79	Q15=82	



Photometric Parameters

Luminous Flux: 347.37 lm	Efficiency: 75.52 lm/W	Radiant Power: 1.089 W
Total mains efficacy: 75.52 lm/W	Energy Efficiency Class: G (EU 2019/2015)	
Pupil Flux: 521.06 Plm	Pupil Lumens Per Watt: 113.27 Plm/W	Pupil Factor (Kp): 1.500
Cirtpic Flux: 1053.52 lm		

Electric Parameters

Voltage: 230.70V	Current: 0.0270A	Power: 4.60W
Power Factor: 0.7240	Frequency: 49.98Hz	

Test Information

Scan Range: 380~800:1nm	Photometric Method: sphere-spectroradiometer
Stabilization Time: 0 ms ALC.: 1.0000	Photometric Condition: Sphere diameter: 2.00m, 4PI
Max of Signal: 45422 (3237)	CCD Integration Time: 1000.00 ms

Condition: Tx:0.0°C, Ti:0.0°C, R.H.:60%
 Test Lab:
 Operator: CRE

Test Device: Lisun LMS-9000B
 Test Time: 2021-04-28 15:14:25
 Inspector:

Lightsource Test Report

Product Information

Product Category: LED-Lampen
 Product Spec: LED-E27-Q8-5W-NW-dim
 Manufacturer: METOLIGHT
 Buyer: 2801

Product Type: LED-Lampen-E27
 Product Number: 1
 Submitted Unit: 100366

WL(nm)	PL	PE(mW/nm)	WL(nm)	PL	PE(mW/nm)	WL(nm)	PL	PE(mW/nm)
380	0.0017	0.0121	525	0.5876	4.1091	670	0.3556	2.4868
385	0.0043	0.0299	530	0.6047	4.2287	675	0.3258	2.2782
390	0.0032	0.0221	535	0.6281	4.3920	680	0.2850	1.9931
395	0.0003	0.0020	540	0.6532	4.5679	685	0.2521	1.7632
400	0.0025	0.0177	545	0.6806	4.7594	690	0.2137	1.4946
405	0.0003	0.0024	550	0.7042	4.9241	695	0.1907	1.3338
410	0.0020	0.0137	555	0.7295	5.1012	700	0.1577	1.1030
415	0.0040	0.0281	560	0.7487	5.2354	705	0.1393	0.9743
420	0.0112	0.0783	565	0.7665	5.3596	710	0.1142	0.7983
425	0.0414	0.2896	570	0.7823	5.4704	715	0.0927	0.6481
430	0.1086	0.7592	575	0.7969	5.5728	720	0.0642	0.4493
435	0.2205	1.5419	580	0.8072	5.6445	725	0.0489	0.3420
440	0.3938	2.7536	585	0.8157	5.7036	730	0.0380	0.2654
445	0.6514	4.5553	590	0.8210	5.7409	735	0.0128	0.0897
450	0.9453	6.6103	595	0.8245	5.7655	740	0.0074	0.0519
455	0.9534	6.6671	600	0.8256	5.7731	745	0.0137	0.0956
460	0.6578	4.5998	605	0.8199	5.7331	750	0.0671	0.4692
465	0.4422	3.0920	610	0.8112	5.6723	755	0.0074	0.0516
470	0.3474	2.4295	615	0.7910	5.5315	760	0.0037	0.0258
475	0.2711	1.8957	620	0.7708	5.3902	765	0.0064	0.0447
480	0.2313	1.6177	625	0.7413	5.1835	770	0.0008	0.0056
485	0.2477	1.7323	630	0.7096	4.9619	775	0.0064	0.0448
490	0.2856	1.9968	635	0.6670	4.6642	780	0.0061	0.0429
495	0.3379	2.3631	640	0.6264	4.3799	785	0.0083	0.0581
500	0.3978	2.7817	645	0.5845	4.0872	790	0.0007	0.0050
505	0.4562	3.1901	650	0.5382	3.7637	795	0.0028	0.0195
510	0.5006	3.5005	655	0.4897	3.4243	800	0.0221	0.1545
515	0.5383	3.7645	660	0.4458	3.1171			
520	0.5603	3.9176	665	0.3995	2.7934			

Condition: Tx:0.0°C, Ti:0.0°C, R.H.:60%
 Test Lab:
 Operator: CRE

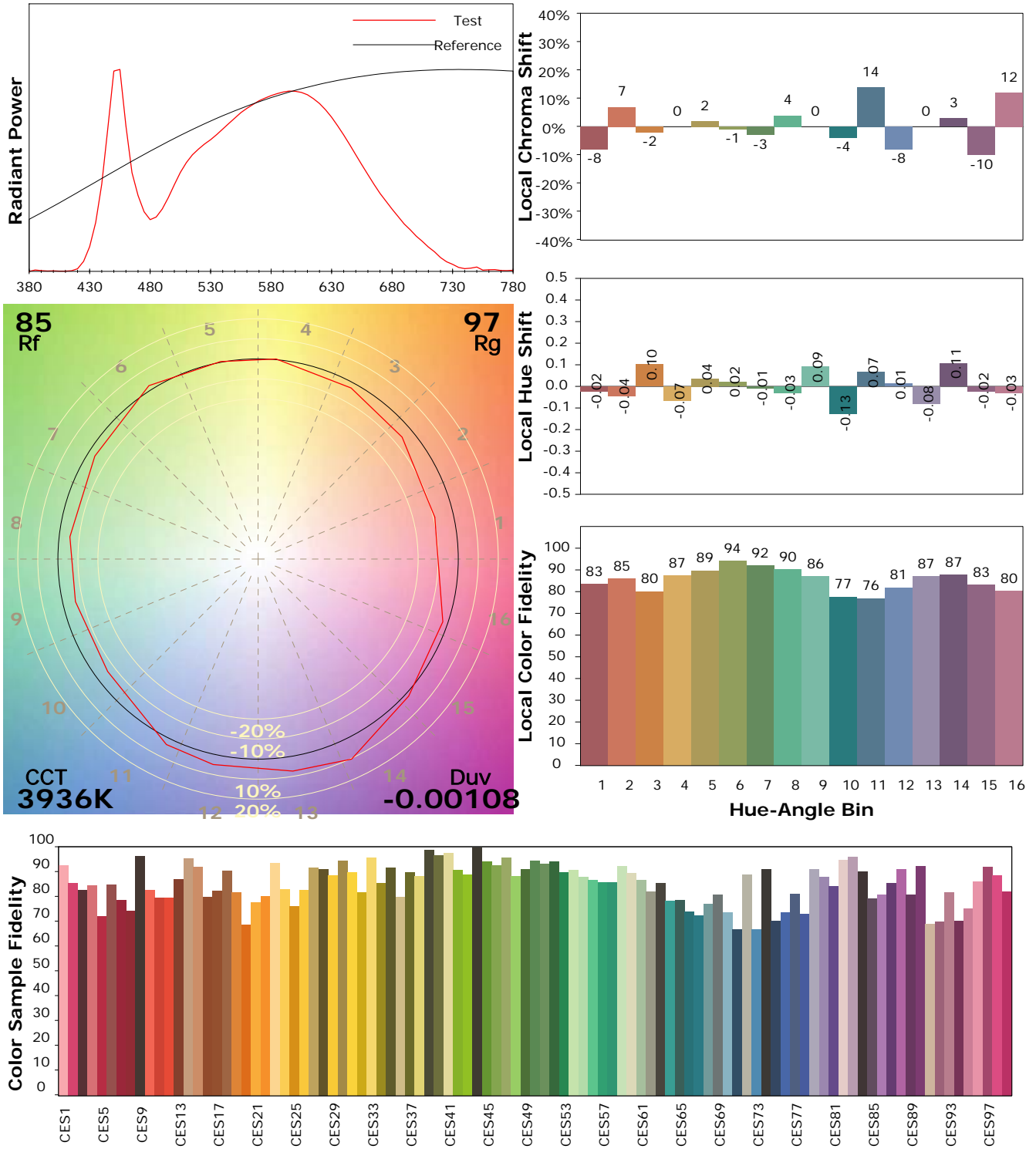
Test Device: Lisun LMS-9000B
 Test Time: 2021-04-28 15:14:25
 Inspector:

I ES TM-30-18 Color Rendition Report

Product Information

Product Category: LED-Lampen
 Product Spec: LED-E27-Q8-5W-NW-dim
 Manufacturer: METOLIGHT
 Buyer: 2801

Product Type: LED-Lampen-E27
 Product Number: 1
 Submitted Unit: 100366



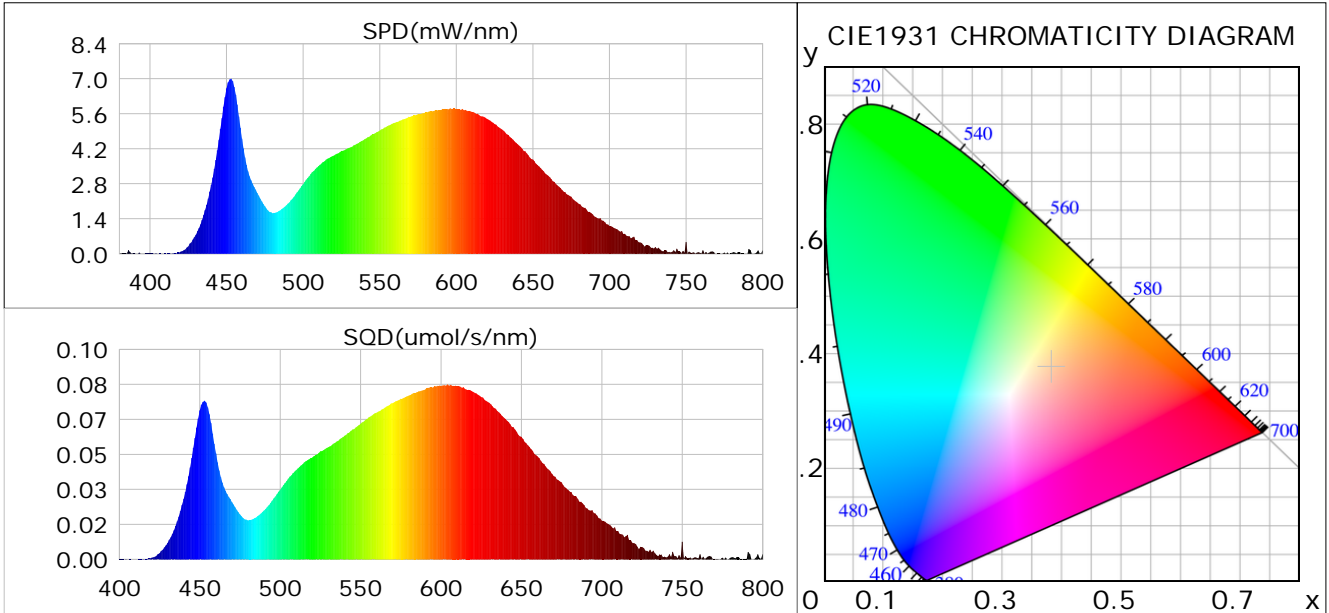
Condition: Tx:0.0°C, Ti:0.0°C, R.H.: 60%
 Test Lab:
 Operator: CRE

Test Device: Lisun LMS-9000B
 Test Time: 2021-04-28 15:14:25
 Inspector:

Plant optical param data

CIE Colorimetric Parameters

Chromaticity coordinates: $x=0.3825$ $y=0.3757$ $u(u')=0.2269$ $v=0.3343$ $v'=0.5014$
 CCT: $T_c=3936K$ ($duv=-0.00108$) Color Ratio: $R=0.190$ $G=0.775$ $B=0.036$
 Peak Wavelength: 452.8nm Half Bandwidth: 20.9nm
 Dominant Wavelength: 579.9nm Color Purity: 0.276
 CRI: $R_a=85.6$



Plant Optical Param

$ \mu_v(lm): 347.37$	$Q_v(lm.s): 347.37$
$ \mu_e, \dot{E}(W/nm): 1.09$	$Q_e(J): 1.09$
$ \mu_e(W): 1.07$	$ \mu_{fr}(W): 0.02$
$ \dot{C}_e: 0.23$	$ \dot{C}_{fr}: 0.01$
$PPE(umol/s/w): 1.09$	$K_{fr}: 0.03$
$Erb_Ratio: 1.63$	$PPF(umol/s): 5.03$
$PF_{uv}(360-400)(umol/s): 0.00$	$PPF(400-500)(umol/s): 0.86$
$PPF(500-600)(umol/s): 2.22$	$PPF(600-700)(umol/s): 1.95$
$PPF_{fr}(700-800)(umol/s): 0.14$	$PPF.t(umol): 5.03$
$ \mu_{ch-A.t}(J): 0.09$	$ \mu_{ch-A}(W): 0.09$
$ \mu_{ch-B.t}(J): 0.05$	$ \mu_{ch-B}(W): 0.05$
$ \mu_b.t(J): 0.22$	$ \mu_b(W): 0.22$
$ \mu_y.t(J): 0.48$	$ \mu_y(W): 0.48$
$ \mu_r.t(J): 0.37$	$ \mu_r(W): 0.37$

Electric Parameters

Voltage: 230.70V	Current: 0.0270A	Power: 4.60W
Power Factor: 0.7240	Frequency: 49.98Hz	

Condition: $T_x:0.0^\circ C$, $T_i:0.0^\circ C$, R.H.: 60%
 Test Lab:
 Operator: CRE

Test Device: Lisun LMS-9000B
 Test Time: 2021-04-28 15:14:25
 Inspector: