

Lightsource Test Report

Product Information

Product Category: LED-DAL-UVL
 Product Number: 100263

Product Type: LED-DAL-UVL540-IP66-150-60W
 Manufacturer: METOLIGHT

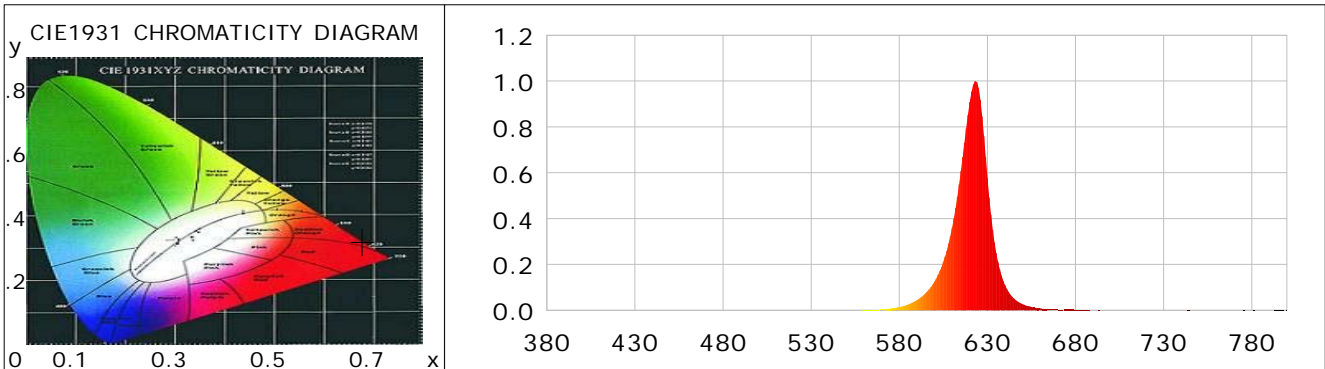
CIE Colorimetric Parameters

Chromaticity coordinates: $x=0.6788$ $y=0.3206$ $u(u')=0.4946$ $v=0.3504$ $v'=0.5256$
 CCT: $T_c=1000K$ ($duv=-0.04667$) Color Ratio: $R=0.903$ $G=0.096$ $B=0.000$
 Peak Wavelength: 623.3nm Half Bandwidth: 17.8nm
 Dominant Wavelength: 614.7nm Color Purity: 0.999
 CRI: $R_a=27.9$, $avgR(1\sim14)=32.9$, $avgR(1\sim15)=30.7$ TM30: $R_f=11$, $R_g=-1$
 GAI: $GAI_BB_8=4.6$, $GAI_BB_15=3.9$, $GAI_EES=0.0$

R1 =9	R2 =76	R3 =36	R4 =0	R5 =8	R6 =91	R7 =4	R8 =0
R9 =0	R10=67	R11=0	R12=78	R13=28	R14=64	R15=0	

Color Quality Scale: $Q_a=0.2$, $Q_f=1.7$, $Q_p=0.1$, $Q_g=1.2$

Q1 =4	Q2 =14	Q3 =3	Q4 =0	Q5 =0	Q6 =0	Q7 =1	Q8 =11
Q9 =9	Q10=1	Q11=0	Q12=0	Q13=0	Q14=0	Q15=0	



Photometric Parameters

Luminous Flux: 1669.2 lm	Efficiency: 31.97 lm/W	Radiant Power: 6.440 W
Total mains efficacy: 31.97 lm/W	Energy Efficiency Class: G (EU 2019/2015)	
Pupil Flux: 221.44 Plm	Pupil Lumens Per Watt: 4.24 Plm/W	Pupil Factor (Kp): 0.133
Cirtpic Flux: 51.00 lm		

Electric Parameters

Voltage: 230.70V	Current: 0.2340A	Power: 52.21W
Power Factor: 0.9630	Frequency: 49.99Hz	

Test Information

Scan Range: 380~800:1nm	Photometric Method: sphere-spectroradiometer
Stabilization Time: 0 ms ALC.: 1.0000	Photometric Condition: Sphere diameter: 2.00m, 4PI
Max of Signal: 46168 (2424)	CCD Integration Time: 33.24 ms

Condition: Tx:20.7'C, Ti:0.0'C, R.H.:60%
 Test Lab:
 Operator: CRE

Test Device: Lisun LMS-9000B
 Test Time: 2020-11-06 12:45:16
 Inspector:

Lightsource Test Report

Product Information

Product Category: LED-DAL-UVL
 Product Number: 100263

Product Type: LED-DAL-UVL540-IP66-150-60W
 Manufacturer: METOLIGHT

WL(nm)	PL	PE(mW/nm)	WL(nm)	PL	PE(mW/nm)	WL(nm)	PL	PE(mW/nm)
380	0.0004	0.1197	525	0.0003	0.0827	670	0.0029	0.8340
385	0.0001	0.0323	530	0.0001	0.0425	675	0.0018	0.5184
390	0.0005	0.1313	535	0.0000	0.0115	680	0.0012	0.3598
395	0.0001	0.0198	540	0.0002	0.0478	685	0.0008	0.2210
400	0.0001	0.0411	545	0.0001	0.0275	690	0.0004	0.1116
405	0.0001	0.0354	550	0.0002	0.0464	695	0.0006	0.1655
410	0.0001	0.0243	555	0.0005	0.1583	700	0.0004	0.1048
415	0.0001	0.0210	560	0.0009	0.2687	705	0.0003	0.0905
420	0.0002	0.0667	565	0.0019	0.5636	710	0.0006	0.1670
425	0.0001	0.0218	570	0.0037	1.0915	715	0.0003	0.0970
430	0.0000	0.0049	575	0.0074	2.1609	720	0.0012	0.3359
435	0.0002	0.0468	580	0.0141	4.1175	725	0.0002	0.0728
440	0.0001	0.0146	585	0.0253	7.3845	730	0.0005	0.1379
445	0.0001	0.0227	590	0.0443	12.9226	735	0.0002	0.0635
450	0.0002	0.0641	595	0.0751	21.9019	740	0.0006	0.1736
455	0.0000	0.0037	600	0.1253	36.5516	745	0.0010	0.2859
460	0.0002	0.0459	605	0.2108	61.5027	750	0.0013	0.3930
465	0.0000	0.0093	610	0.3596	104.9087	755	0.0005	0.1418
470	0.0000	0.0139	615	0.6079	177.3538	760	0.0002	0.0676
475	0.0001	0.0215	620	0.9088	265.1157	765	0.0006	0.1677
480	0.0001	0.0225	625	0.9695	282.8132	770	0.0004	0.1050
485	0.0002	0.0529	630	0.5768	168.2703	775	0.0012	0.3384
490	0.0001	0.0200	635	0.2504	73.0350	780	0.0005	0.1474
495	0.0001	0.0174	640	0.1100	32.0952	785	0.0000	0.0051
500	0.0001	0.0364	645	0.0520	15.1751	790	0.0001	0.0262
505	0.0001	0.0282	650	0.0271	7.8991	795	0.0007	0.2051
510	0.0000	0.0060	655	0.0149	4.3435	800	0.0017	0.4901
515	0.0001	0.0300	660	0.0084	2.4546			
520	0.0001	0.0282	665	0.0048	1.4111			

Condition: Tx:20.7'C, Ti:0.0'C, R.H.:60%
 Test Lab:
 Operator: CRE

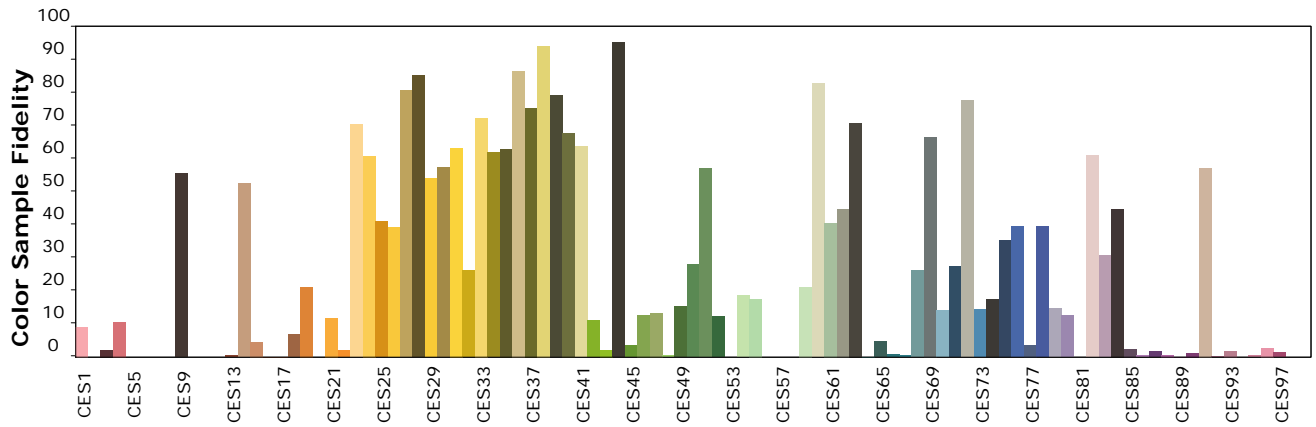
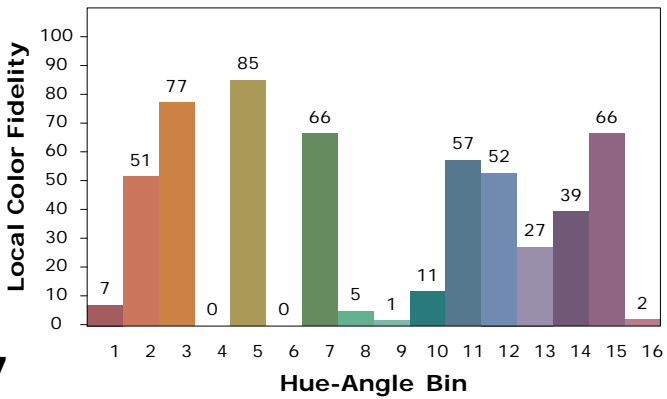
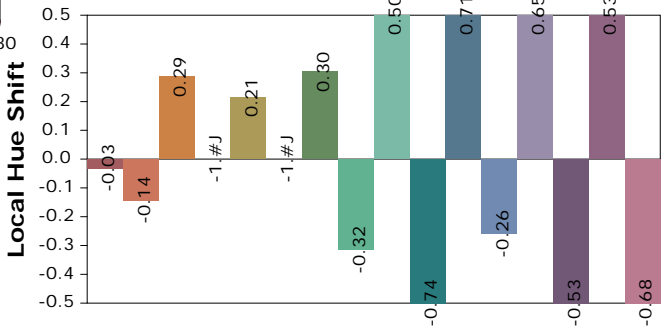
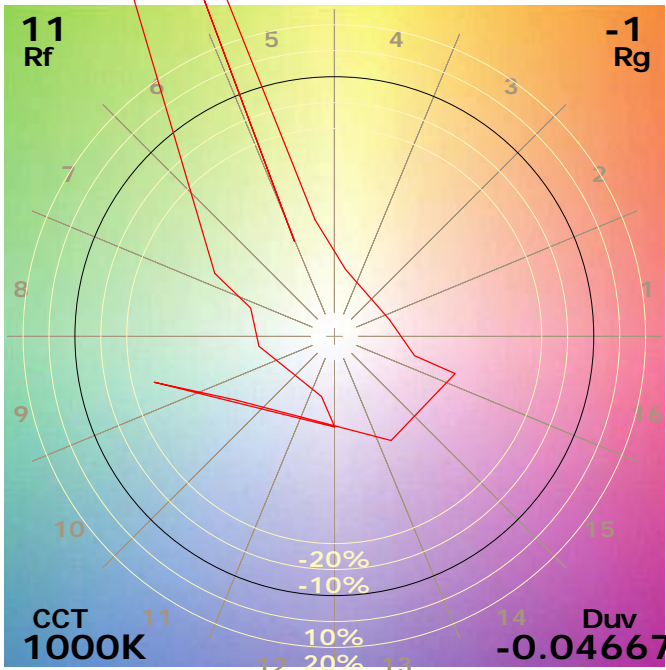
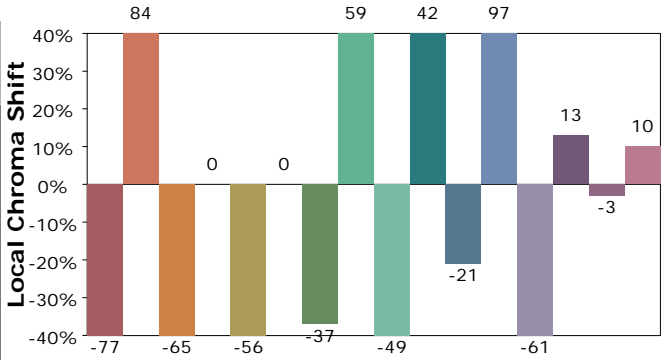
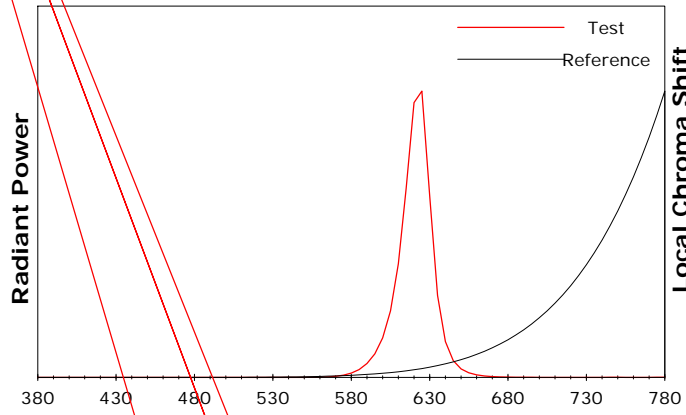
Test Device: Lisun LMS-9000B
 Test Time: 2020-11-06 12:45:16
 Inspector:

IES TM-30-18 Color Rendition Report

Product Information

Product Category: LED-DAL-UVL
 Product Number: 100263

Product Type: LED-DAL-UVL540-IP66-150-60W
 Manufacturer: METOLIGHT



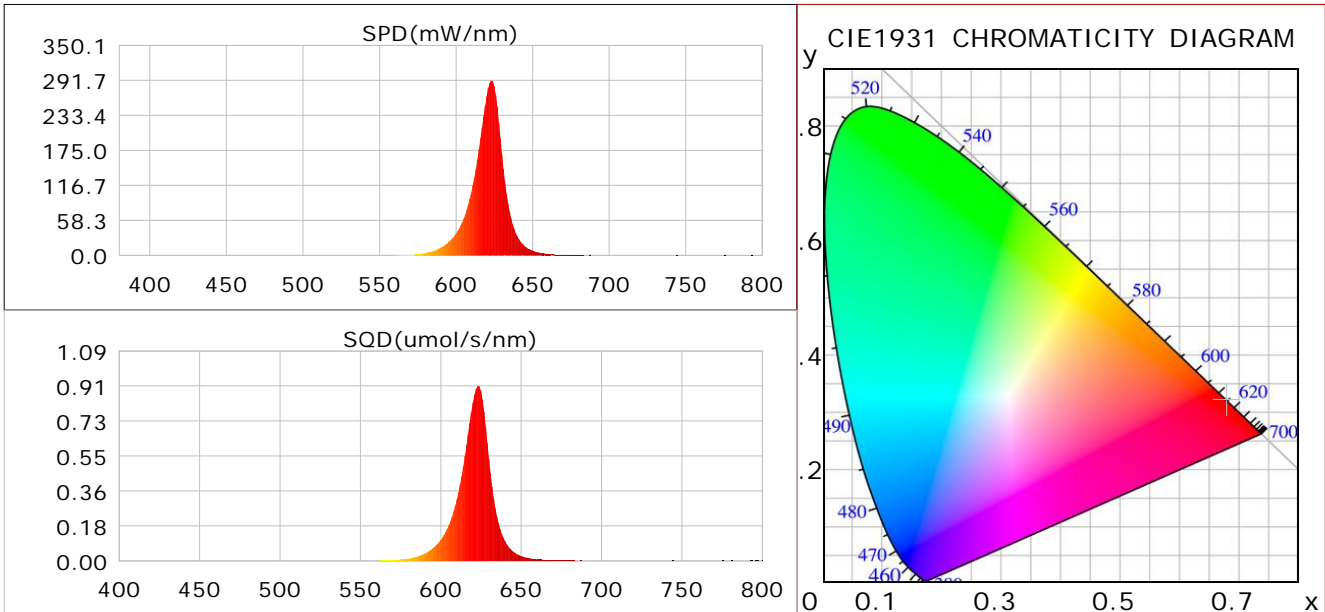
Condition: Tx:20.7°C, Ti:0.0°C, R.H.:60%
 Test Lab:
 Operator: CRE

Test Device: Lisun LMS-9000B
 Test Time: 2020-11-06 12:45:16
 Inspector:

Plant optical param data

CIE Colorimetric Parameters

Chromaticity coordinates: $x=0.6788$ $y=0.3206$ $u(u')=0.4946$ $v=0.3504$ $v'=0.5256$
 CCT: $T_c=1000K$ ($duv=-0.04667$) Color Ratio: $R=0.903$ $G=0.096$ $B=0.000$
 Peak Wavelength: 623.3nm Half Bandwidth: 17.8nm
 Dominant Wavelength: 614.7nm Color Purity: 0.999
 CRI: Ra= 27.9



Plant Optical Param

$ \mu_v(\text{lm})$: 1669.25	$Q_v(\text{lm}\cdot\text{s})$: 1669.25
$ \mu_e, \dot{E}(W/nm)$: 6.44	$Q_e(J)$: 6.44
$ \mu_e(W)$: 6.43	$ \mu_{fr}(W)$: 0.01
$ \zeta_e$: 0.12	$ \zeta_{fr}$: 0.00
$PPE(\text{umol/s/w})$: 0.64	K_{fr} : 0.00
Erb_Ratio : 2117.86	$PPF(\text{umol/s})$: 33.34
$PF_{uv}(360-400)(\text{umol/s})$: 0.00	$PPF(400-500)(\text{umol/s})$: 0.01
$PPF(500-600)(\text{umol/s})$: 1.76	$PPF(600-700)(\text{umol/s})$: 31.58
$PF_{fr}(700-800)(\text{umol/s})$: 0.09	$PPF.t(\text{umol})$: 33.34
$ \mu_{ch-A.t}(J)$: 0.51	$ \mu_{ch-A}(W)$: 0.51
$ \mu_{ch-B.t}(J)$: 0.18	$ \mu_{ch-B}(W)$: 0.18
$ \mu_b.t(J)$: 0.00	$ \mu_b(W)$: 0.00
$ \mu_y.t(J)$: 0.36	$ \mu_y(W)$: 0.36
$ \mu_r.t(J)$: 6.11	$ \mu_r(W)$: 6.11

Electric Parameters

Voltage: 230.70V	Current: 0.2340A	Power: 52.21W
Power Factor: 0.9630	Frequency: 49.99Hz	

Condition: Tx:20.7'C, Ti:0.0'C, R.H.:60%
 Test Lab:
 Operator: CRE

Test Device: Lisun LMS-9000B
 Test Time: 2020-11-06 12:45:16
 Inspector: